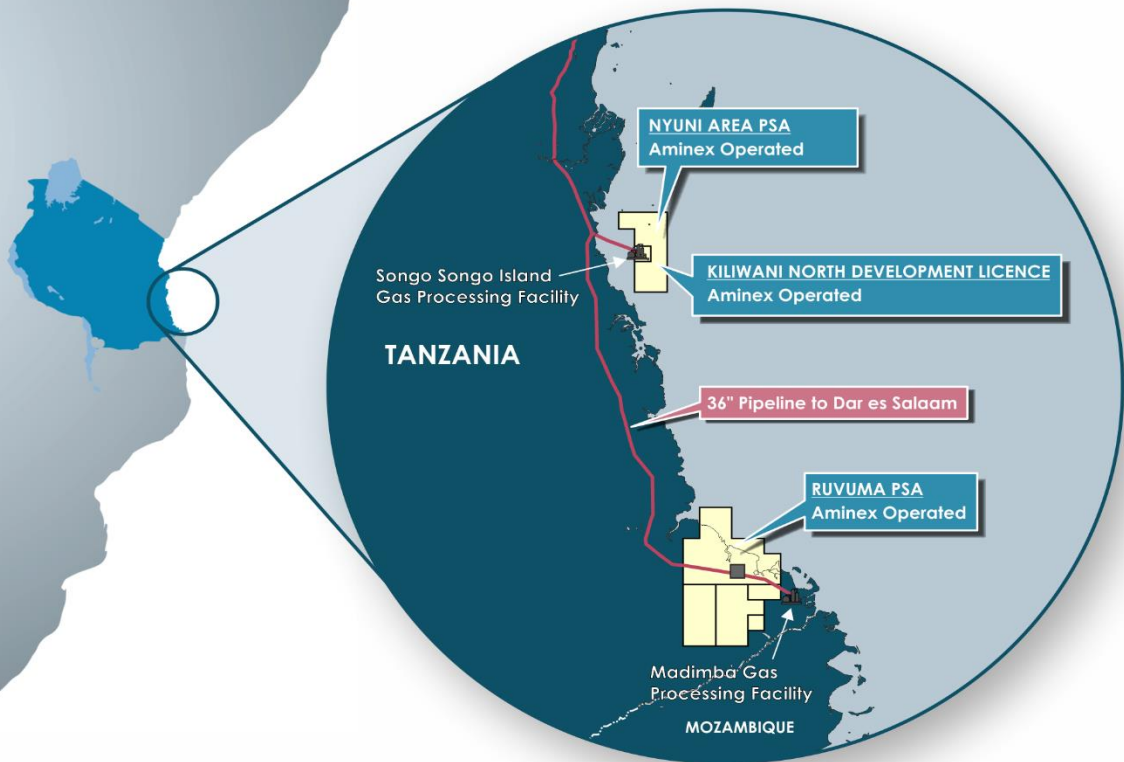


Ntorya Gas Field Basin Model Update



LSE:AEX



Contact us



60 Sloane Avenue, London, SW3 3DD
Web: www.aminex-plc.com

September 2017

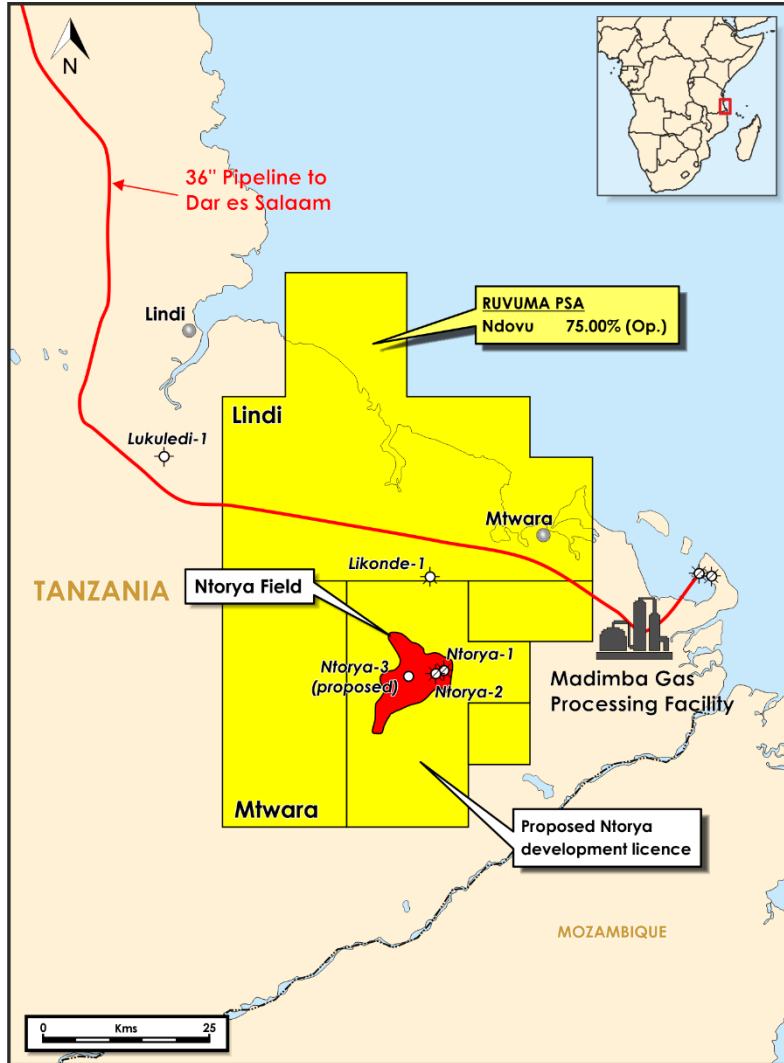
Certain information contained herein constitutes forward-looking statements, which can be identified by the use of forward-looking terminology such as “anticipates”, “believes”, “estimates”, “expects”, “intends”, “may”, “plans”, “projects”, “should” or “will”, or, in each case, their negative or other variations or comparable terminology, or by discussions of strategy, plans, objectives, goals, future events or intentions.

These forward-looking statements include all matters that are not historical facts. They appear in a number of places throughout this document and include, but are not limited to, statements regarding the Company’s intentions, beliefs or current expectations concerning, amongst other things, the Company’s results of operations and financial condition and future business plans and strategies. By their nature, forward-looking statements involve risk and uncertainty because they relate to future events and circumstances.

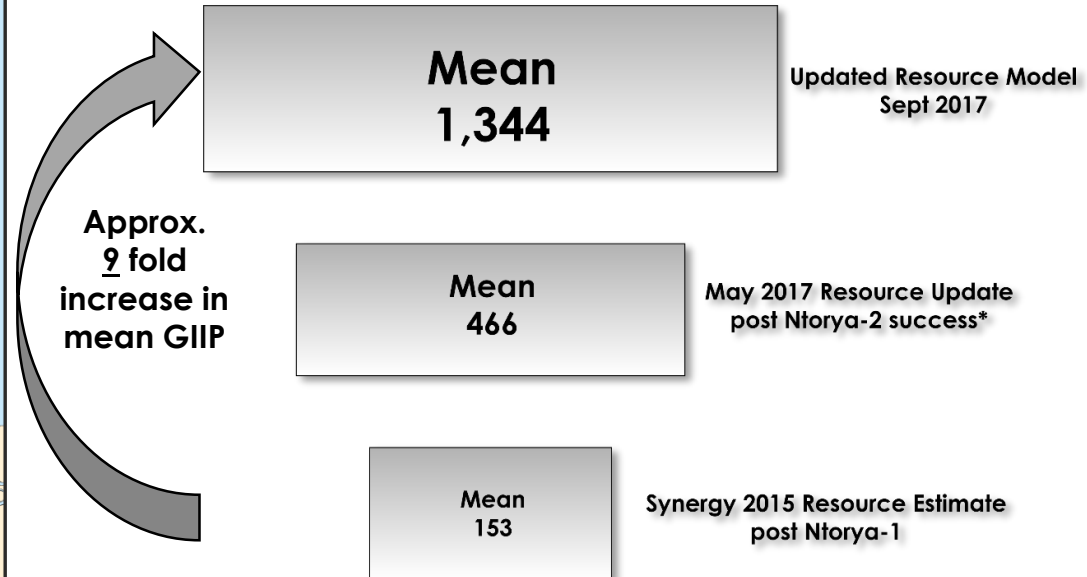
Forward-looking statements are not guarantees of future performance and the actual results of the Company’s operations, financial position and liquidity, prospects, growth, strategies and expectations and the development of the markets and the industry in which the Company operates may differ materially from those described in, or suggested by, the forward-looking statements contained in this document. No statement in this document is intended to be or may be construed as a profit forecast.

A number of factors could cause results and developments of the Company to differ materially from those expressed or implied by the forward-looking statements including, without limitation, general economic and business conditions, industry trends, competition, changes in regulation, currency fluctuations, changes in its business strategy, political and economic uncertainty and other factors. The Company does not undertake to update or supplement any forward-looking statement in this document.

Ntorya Resource Upgrade

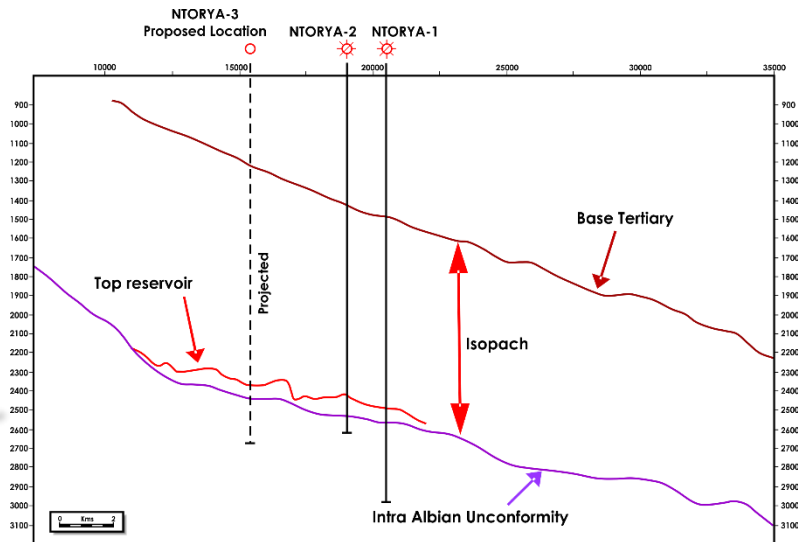
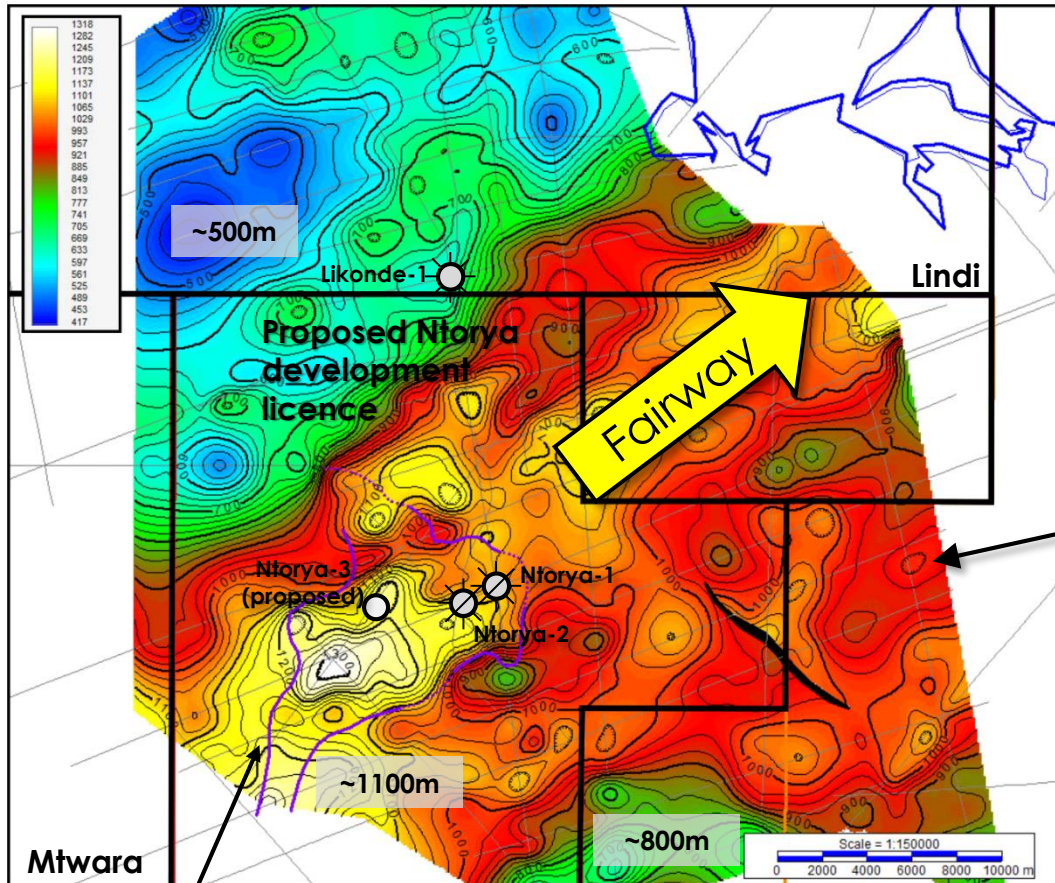


Ntorya Resource Estimates (BCF)*



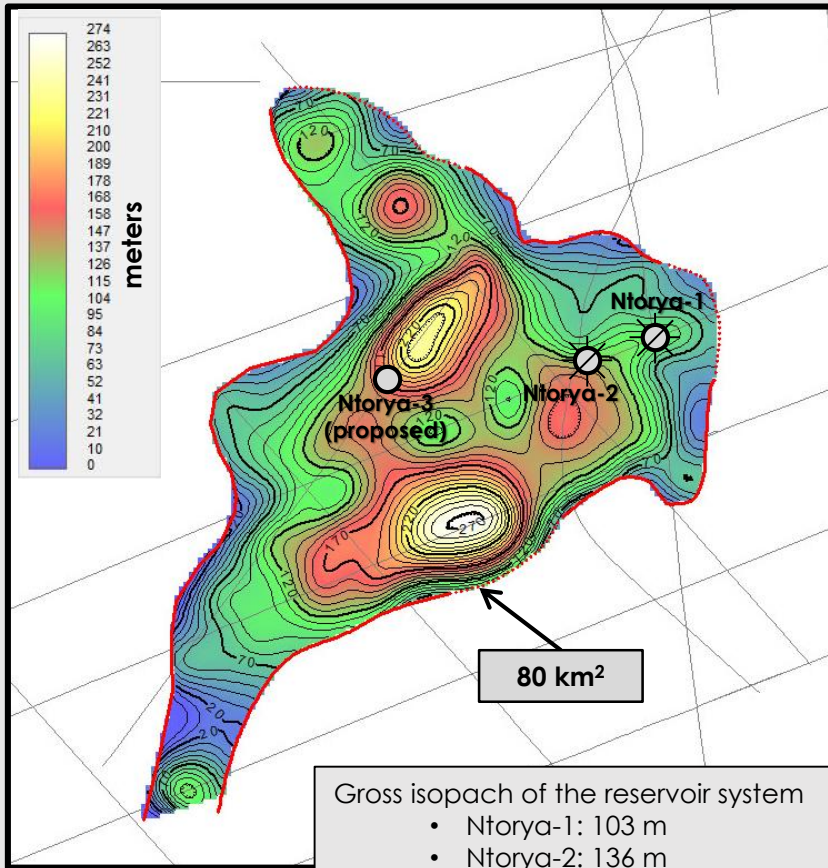
- *Un-risked management resource estimates of original gas in place
- Ndovu Resources Ltd. is a wholly owned subsidiary of Aminex

Upper Cretaceous Fairway

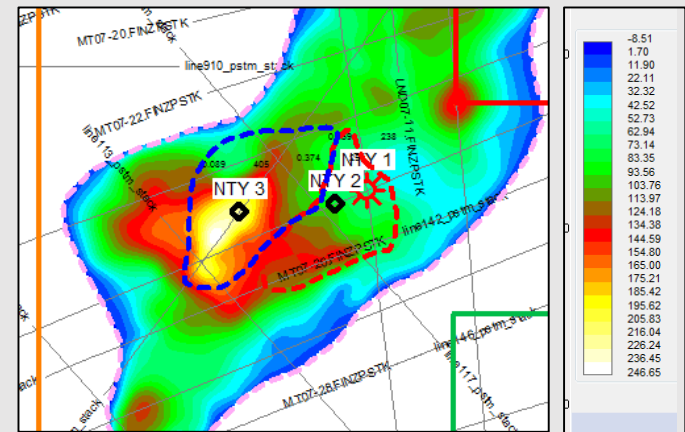
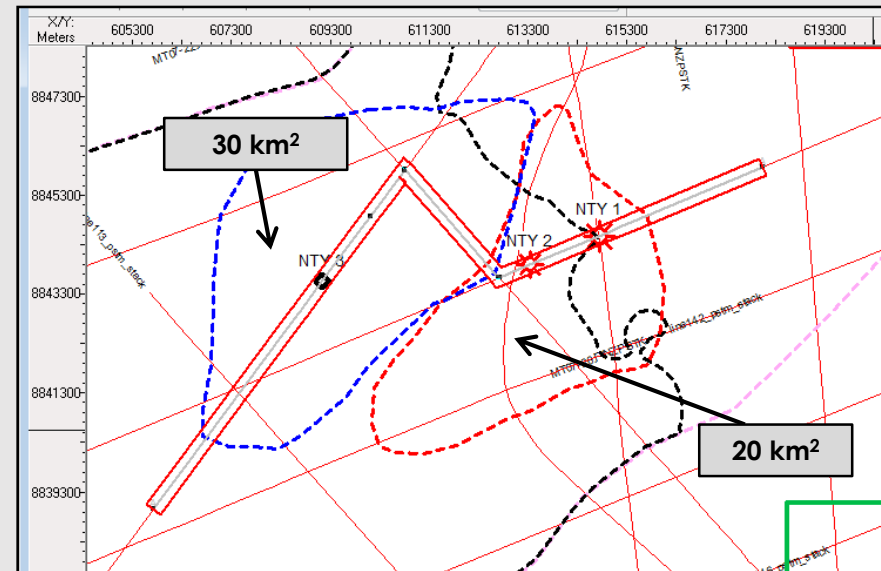


New mapping clearly defines a Base of slope fan system (reservoir)

New mapping



Old mapping





Contact us:

London

Aminex Petroleum Services Limited
60 Sloane Avenue
London, UK
SW3 3DD
Tel: +44 (0)20 3198 8415

Email: info@aminex-plc.com

Web: www.aminex-plc.com

[Click here for map](#)

Tanzania

Ndovu Resources Ltd
Plot No. 431, Mahando Street
Msasani Peninsular
PO Box 105589
Dar es Salaam, Tanzania
Tel: +255 (0)22 2600814
Fax: +255 (0)22 2601809